

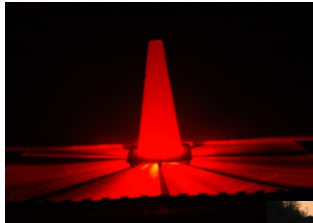


Custom Carry Bags available in two sizes:

Small: holds up to 4
Medium: holds up to 8



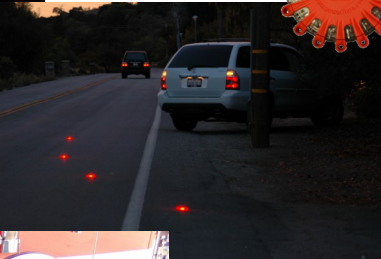
Two zippered compartments. One for the Safety Lights and one for extra batteries and allen wrench.



PowerFlare light under a traffic cone



PowerFlare lights deployed on road for car & driver safety



PowerFlare light being run over by a fire truck



Accidental Combustion of Fusee Flares in Trunk of Police Car

Copyright © 2009 PF Distribution Center, Inc. All Rights Reserved. POWERFLARE (reg. mark), the PowerFlare logo, and "By First Responders for First Responders" are trademarks of PowerFlare Corp. Specifications subject to change without notice. Pat. Pending (U.S. and other countries).



PowerFlare® products have been proven with some of the most demanding users in the world: military, special forces, SWAT teams (tactical infrared available), rescue units, police, sheriffs, first responders, and many others.

Customers	Applications
Law Enforcement, Military	Traffic safety, SWAT, EOD (infrared available)
Fire, EMS, Rescue	Traffic safety, beacons for fireground marking, RIT/RIC, SAR, helicopter LZs
Public Works, Utilities, Road Crews, Tow Trucks	Work zone safety
Emergency Response Teams	Mark personnel, triage
Home Safety	Disasters, blackouts, signal ambulance or rescuers
Industrial Safety	Emergency kits, employee/customer appreciation
Sports	Boating, hiking, camping, SCUBA diving, hunting, fishing, biking

"With PowerFlare units, there are no health or environmental concerns. There is no smoke to inhale, no residue to worry about, no fires to extinguish, and we are utilizing a device that provides better visibility, making it safer for the police officers and the public."

Lt. J. Tanoue, Maui Police Dept.

PF Distribution Center, Inc.

Worldwide Master Distributor

6489 Camden Ave., Ste. 210

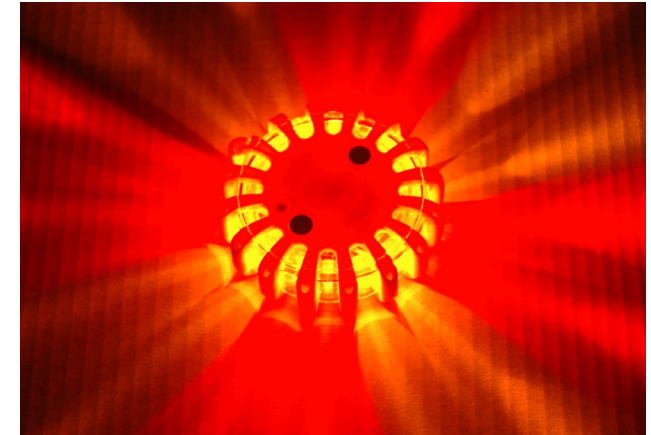
San Jose, California 95120

Tel: 408-323-2370/2379 Fax: 408-268-5431

Toll Free: 877-256-6907

Web: www.pfdistributioncenter.com

PowerFlare® PF-200 Safety Light



Vehicle Breakdown * Traffic Control
Rescue Signal * Boating/Marine SCUBA
Diving

Tactical Police & Military Operations

Helicopter Landing Zones

Power Blackouts * Earthquakes

Hurricanes * Disasters

Other Emergencies



www.pfdistributioncenter.com

Invented by a police officer, the amazing new **PowerFlare® PF-200 Safety Light** is an essential piece of equipment for police, firefighters, EMTs, rescue first responders, and members of emergency response teams.

This compact (4") light emits 360° of ultra-bright light from an array of 16 LEDs, visible for up to 10 miles away. It is waterproof and so tough, *you can run it over with a fire truck.* (See video on www.powerflare.com).

Unlike flashlights with alkaline batteries or chemical light sticks, PowerFlare units can handle extreme temperatures, can be used in HAZMAT situations (intrinsically safe), and feature an impressive 10 year storage/shelf life, using lithium batteries that won't ever leak.

This same technology used by first responders and the military is now available for you and your family.

Personal safety:

- in your car in case of breakdown or accident
- keep in disaster supply kit
- power failure/blackouts
- signal rescuers to your house (put in window or driveway)
- sports and recreation (easy to clip on to belt, backpack, bicycle, etc.)
- SCUBA diving: waterproof to 80'



The PowerFlare® PF-200 Safety Light has 10 flash patterns, including U.S. Coast Guard approved "SOS" (Morse code) and solid-on (lantern). Runs up to 150 hours on the replaceable CR-123 non-rechargeable batteries or up to 100 hours on the replaceable RCR-123 rechargeable batteries.



PF-200 & PF-200R Specifications

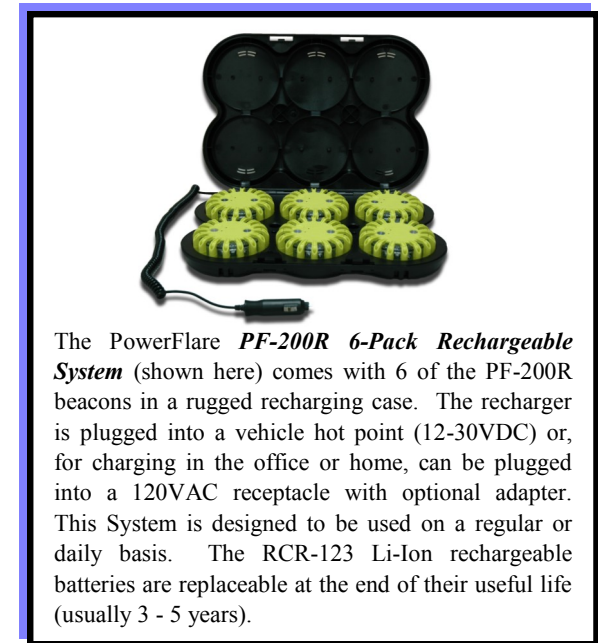
	PF-200	PF-200R (Rechargeable)
Size	4.25" (12cm) diameter x 1.25" (3.5cm) tall	
Weight	Less than 7 oz. (200g) with battery	
Battery	1 CR-123 Lithium battery	1 RCR-123 3.6V rechargeable Li-Ion battery
Shelf-Life	10 years	Holds useful charge for ~60 days out of charger; but meant to be left in charger when not in use
Buoyancy	Positive (floats); can attach weight	
External Power	Non-rechargeable CR-123 Battery	Charger PF-CHGR-206: 12-30VDC, 1A (max.); 0.7A trickle (A/C adapter avail.) @12VDC nominal
Op. & Storage Temps	Fahrenheit: -40/-40 to 212/248 deg F Celsius: -40/-40 to 100/110 deg C	
Emission Source	360 degree LED array: solid-state; no filament	
LED Light Colors (per unit)	Red, amber, blue, green, white, infrared (IR). Custom colors available.	
Light Output Wavelength (nm) Color & Power (PEP)	Red:----- 630 @ 128,000 mcd Amber:----- 595 @ 80,000 mcd Blue:----- 464 @ 38,400 mcd Green:----- 525 @ 80,000 mcd White:----- white spectrum @ 96,000 mcd Infrared:----- 890 @ 236 mW	
Daylight & Night Visibility Ranges	<u>Night:</u> visible to 900M (~3,000 ft) on road or water >10 miles (16 km) from air <u>Day:</u> visible to 300M (~1,000 ft).	
Housing Color & Material	Yellow, orange, or olive drab (OD) polymer	
Water Depth Rating	80' submersion	
HAZMAT	Hermetically sealed; intrinsically safe design	
Chemical	Contains no hazardous chemicals Withstands exposure to petroleum-based fuels <i>Avoid acetones and benzopyrenes</i>	
Switch Type	Push button	
Flash Patterns (User-Selectable) Max. Run Times, Continuous	Flash Pattern	PF-200 PF-200R
<i>Note: Times listed are for red, amber, and IR LEDs. Blue, Green & White color LED versions will run from 50-80% of listed times depending on pattern used.</i>	Solid-On High:	8 hours-----2 hours
	Rotate:	16 hours-----3 hours
	Alternate:	10 hours-----2 hours
	Quad-Blink:	50 hours-----10 hours
	Double-Blink:	35 hours-----7 hours
	Fast-Blink:	20 hours-----8 hours
	Slow-Blink:	150 hours-----100 hours
	Solid-On Low:	100 hours-----36 hours
	"S-O-S":	24 hours-----4 hours
	Flashlight:	25 hours-----3 hours

The **PowerFlare PF-200 Series of Electronic LED Safety Lights** comes in two styles:

- Non-rechargeable **PF-200**, which uses a single replaceable CR-123 Lithium battery.
- Rechargeable **PF-200R**, which uses a single replaceable RCR-123 3.6V Lithium-Ion battery.

LED Colors:

- Red
- Amber (shown)
- White (shown)
- Green (shown)
- Blue (shown)
- Infrared



The PowerFlare **PF-200R 6-Pack Rechargeable System** (shown here) comes with 6 of the PF-200R beacons in a rugged recharging case. The recharger is plugged into a vehicle hot point (12-30VDC) or, for charging in the office or home, can be plugged into a 120VAC receptacle with optional adapter. This System is designed to be used on a regular or daily basis. The RCR-123 Li-Ion rechargeable batteries are replaceable at the end of their useful life (usually 3 - 5 years).

Approvals & Certifications:

- Complies with U.S. DOT (FMCSA) 49 CFR §§ 392.25 & 393.95(g).*
- MUTCD Type A (flashing) and Type C (solid on).
- Designed to meet MIL-SPEC/MIL-STD 810 for shock, vibration, and water-resistance.
- CE Certified
- RoHS Compliant

* Federal Regulations 49 CFR §§ 392.25 & 393.95(g) prohibit the carrying of any flame-producing flare on any Commercial Motor Vehicle (CMV) transporting explosives; any cargo of flammable liquid or flammable compressed gas, whether loaded or empty; or any CMV using compressed gas as a motor fuel. **PowerFlare®** products would be allowed on such CMVs.